

micon VFC 2 x 20

PC Software for mitex VFC 2 x 20

User's Manual

micon VFC 2 x 20

PC Software for mitex VFC 2 x 20

1 General

micon VFC 2x20 PC software is used to download and upload texts to and from the display unit mitex VFC 2x20.

The software can be run with one of the following operating systems:
Windows 95, Windows 98 or Windows NT.

Communication is established via the RS 232 interface
with following parameters:

19200 Baud
8 data bits
1 stop bit
even parity

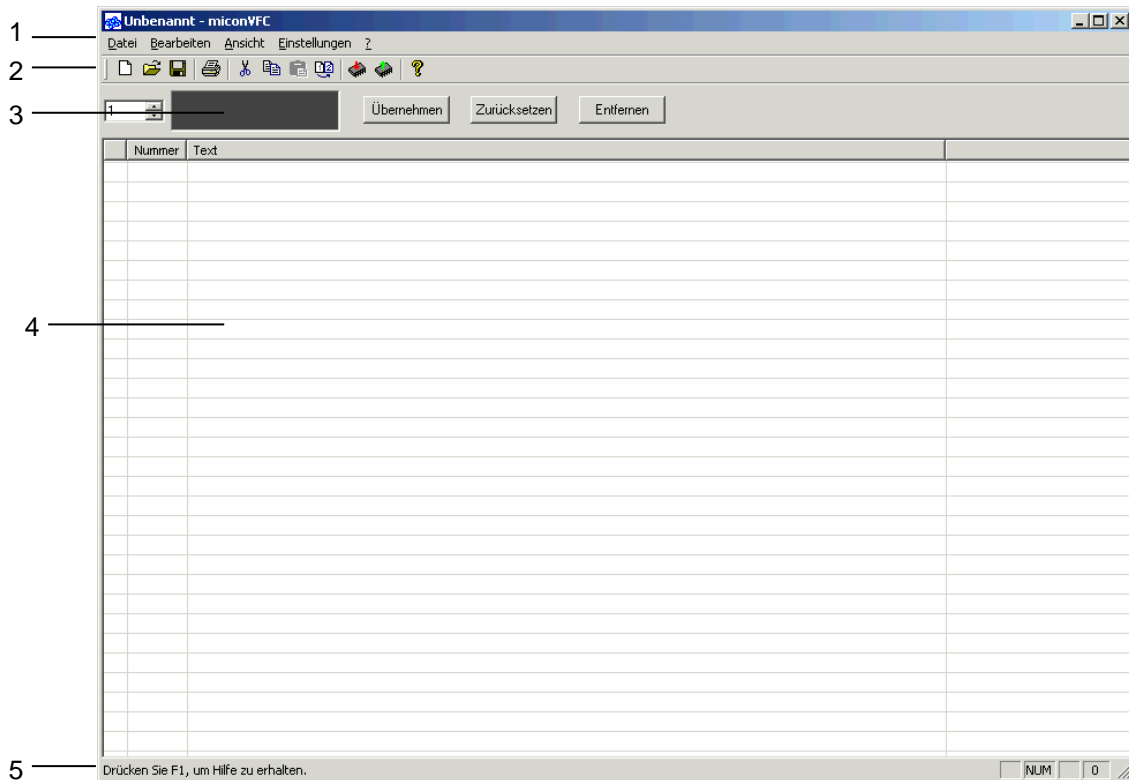
The program includes the following functions:

- Display messages can be downloaded and uploaded to and from the EEPROM of the mitex VFC 2 x 20
- Messages can be displayed and edited.

micon VFC 2 x 20

PC Software for mitex VFC 2 x 20

2 Main Program Window



- | | |
|--|--|
| <ol style="list-style-type: none"> 1. Menu Bar 2. Toolbar 3. Message Input Bar 4. Message List 5. Status Bar | <p>Please refer to chapter 2.2 for a detailed description of available functions.</p> <p>Please refer to chapter 2.3 for a detailed description of available functions.</p> <p>Please refer to chapter 2.4 for a detailed description of available functions.</p> <p>Overview of previously entered messages</p> |
|--|--|

micon VFC 2 x 20

PC Software for mitex VFC 2 x 20

2.1 Explanations

- In order to edit a message, select the desired text with a single mouse click from the message list **(4)**. Move the cursor to the message input bar **(3)**. The message can now be edited and formatted within this field. After message editing has been completed, acknowledge with the Button “Übernehmen”, the edited text now appears in the message list **(4)**.
- Any of the messages in the list can be transmitted to the display unit for viewing by clicking on the desired text in the message list **(4)**. This type of individual message display is only intended to provide the user with a preview – the message is not saved to EEPROM at the display unit.
- Proceed in this fashion until all necessary messages have been edited as required. After a given project has been completed at the PC, it can be saved to the hard disc if desired by clicking on the save icon in toolbar **(2)**, or by selecting the save function from the Message menu.
- Select “In EEPROM schreiben” in order to transmit and save all messages to the display unit.

If it has been correctly connected, the messages are transmitted to the display unit where they are stored to the EEPROM. This may take several minutes.

All of the messages have now been permanently saved to memory at the display unit. Messages can now be queried directly from the display unit and displayed by clicking on the desired entry in the message list **(4)**.

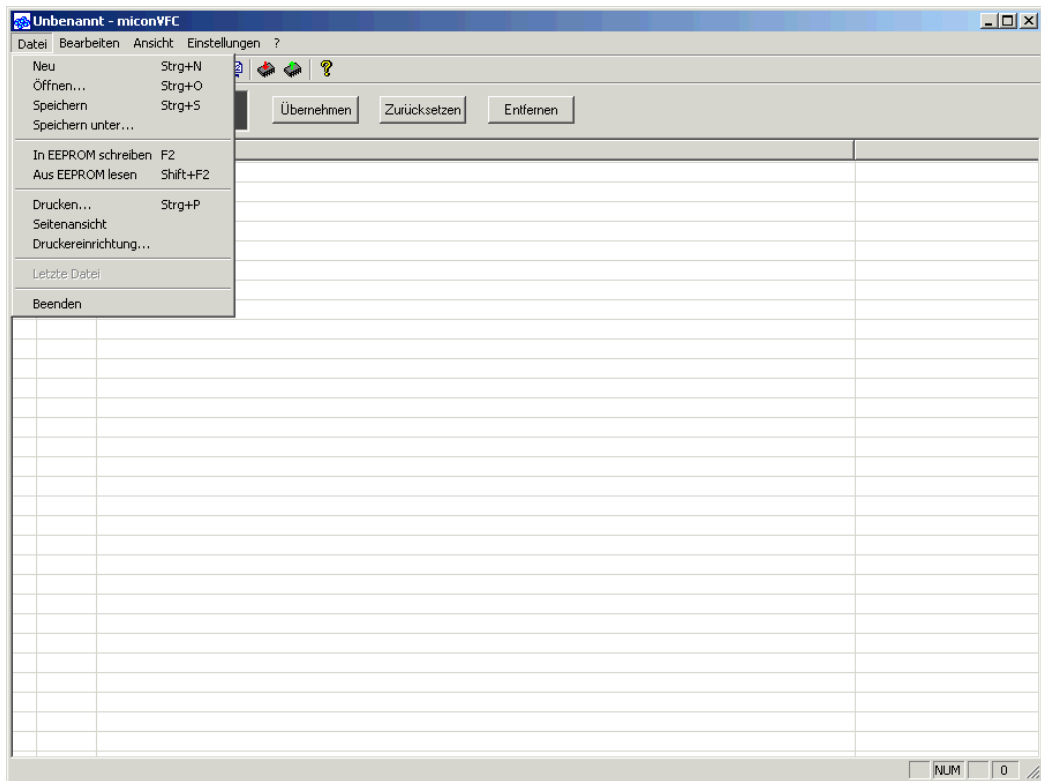
Messages can be uploaded from the display unit to the PC by activating the function “Aus EEPROM lesen” . The messages are read out from the display unit and entered into the message list.

micon VFC 2 x 20

PC Software for mitex VFC 2 x 20

2.2 Description of the Menu Bar

Menu "Datei" -> "File"

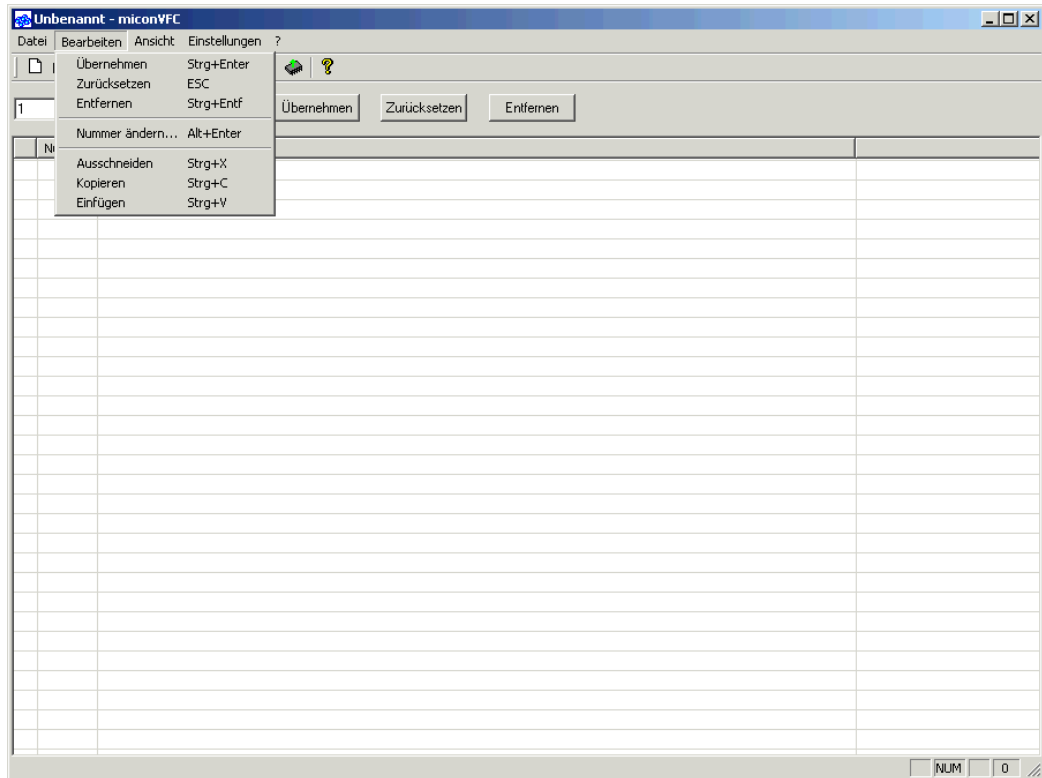


Neu	New	Create a new project
Öffnen	Open	Open an existing project
Speichern	Save	Save the project
Speichern unter	Save as	Save the project
In EEPROM schreiben	Write to display unit	Download to EEPROM
Aus EEPROM lesen	Read from display unit	Upload from EEPROM
Drucken	Print	Print the project
Seitenansicht	Page view	Print preview
Druckereinrichtung	Printer setup	Set up printer attributes
Beenden	End	Exit the program

micon VFC 2 x 20

PC Software for mitex VFC 2 x 20

Menu "Bearbeiten" -> "Edit"

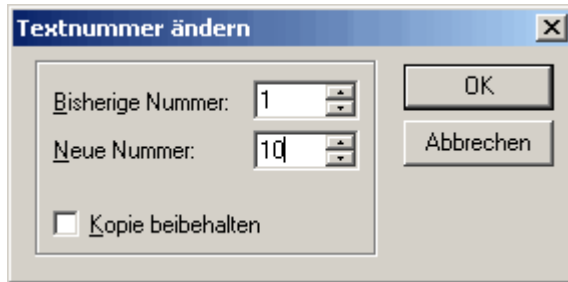


Übernehmen	Apply	The edited text appears in the message list
Zurücksetzen	Undo	The edited text is deleted
Entfernen	Delete	The selected line in the message list is deleted.
Nummer ändern	Change	The selected line number is changed in the message list
Ausschneiden	Cut	The selected line in the message list is copied and deleted.
Kopieren	Copy	The selected line in the message list is copied.
Einfügen	Paste	The selected line is replaced.

micon VFC 2 x 20

PC Software for mitex VFC 2 x 20

Function “Nummer ändern” → “change number”



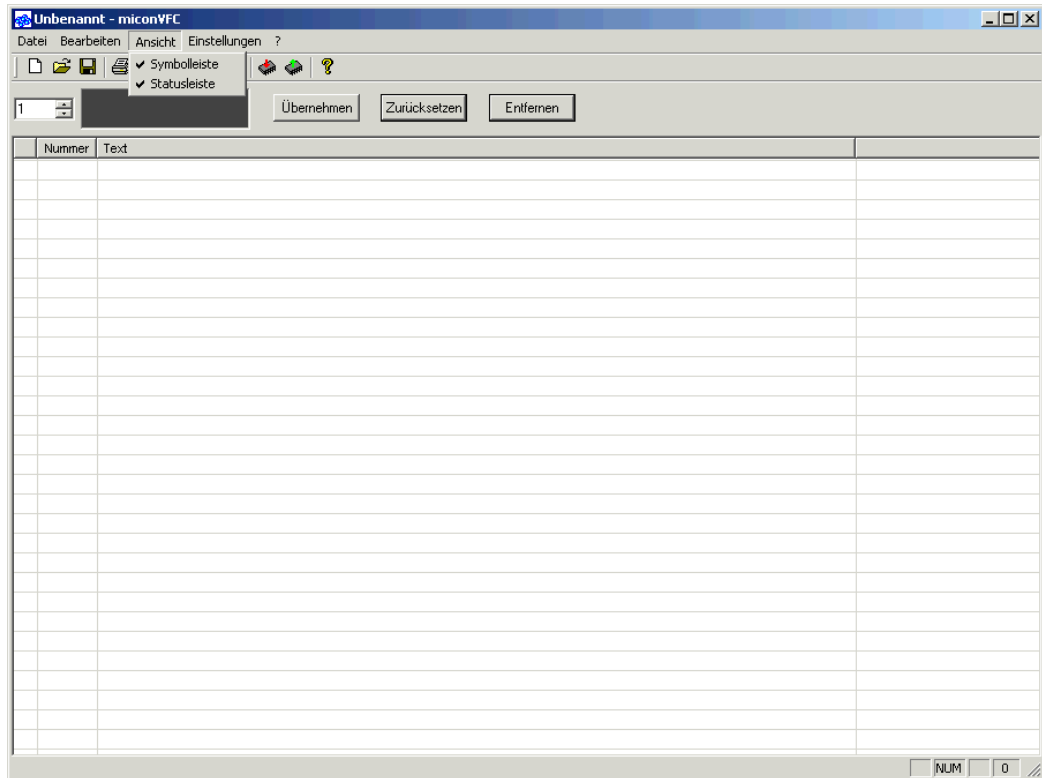
Bisherige Nummer	Existing number	Select an existing number
Neue Nummer	New number	Input the new number
Kopie beibehalten	Retain a copy	Retaining the existing text number

With this function the text number in the message list can be changed. By pressing the button “OK” the existing text number is changed to the new text number. If the checkbox “Kopie beibehalten” (Retain a copy) is not checked the existing text number will be deleted. The button “Abbrechen” will cancel this function.

micon VFC 2 x 20

PC Software for mitex VFC 2 x 20

Menu "Ansicht" -> "View"

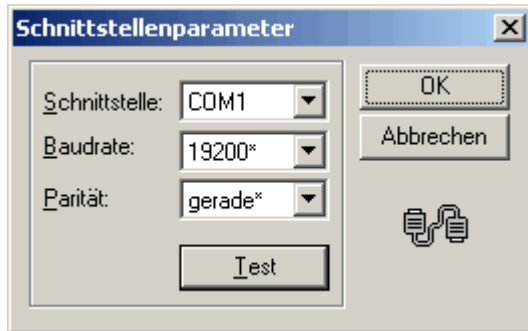


Symbolleiste	Toolbar	Show or hide the toolbar
Statusleiste	Status bar	Show or hide the status bar

micon VFC 2 x 20

PC Software for mitex VFC 2 x 20

Menu “Einstellungen” → “Interface configuration”



Schnittstelle	Interface	COM1 ... COM4
Baudrate	Baudrate	1200 ... 115200 baud
Parität	Parity	keine → none
		gerade → even
		ungerade → odd

The parameters for the mitex VFC 2 x 20 are

19200 baud
 8 data bits
 1 stop bit
 even parity

With the button “Test” the connection to the mitex VFC 2 x 20 can be tested.

By pressing the button “OK” the selected parameters will be saved.

The button “Abbrechen” will cancel this function.

micon VFC 2 x 20

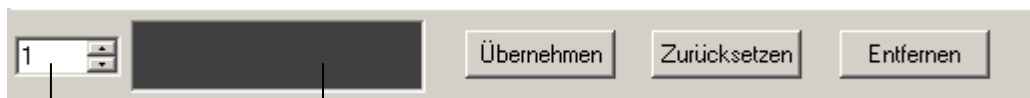
PC Software for mitex VFC 2 x 20

2.3 Description of the Toolbar



1	New	Create a new project
2	Open	Open an existing project
3	Save	Save the project
4	Print	Print the project
5	Cut	The selected line in the message list is copied and deleted.
6	Copy	The selected line in the message list is copied.
7	Paste	The selected line is replaced.
8	Change	The selected line number is changed in the message list
9	Write to display unit	Download to EEPROM
10	Read from display unit	Upload from EEPROM
11	Help	Software version, Copyright

2.4 Description of the Message Input Bar



Text number
(1 ... 255)

Edit field

Übernehmen	Apply	The edited text appears in the message list
Zurücksetzen	Undo	The edited text is deleted
Entfernen	Delete	The selected line in the message list is deleted

micon VFC 2 x 20

PC Software for mitex VFC 2 x 20

3 Appendix

3.1 Versions Overview

Ver.	Date	Comments
1.00	6/7/2004	Bernhard
1.10	3/19/2013	Company address changed
1.20	10/17/2013	Logo
1.30	12/11/2017	Change of address

Certified per **DIN ISO EN 9001**.